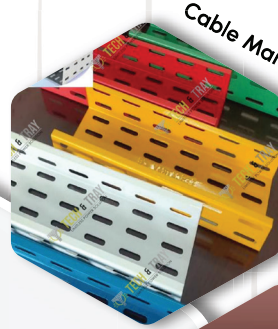
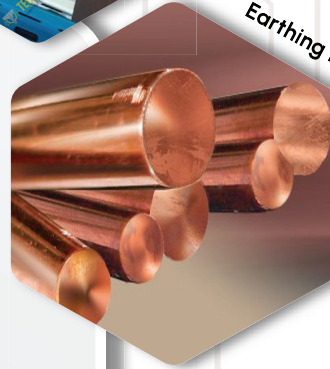




Fasteners



Cable Management System

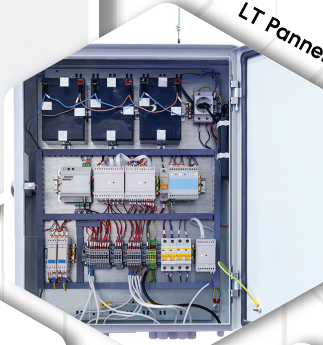


Earthing Protections System



TECH & TRAY

LIMITLESS POWER SOLUTION



LT Panels and Automation



Cable Termination



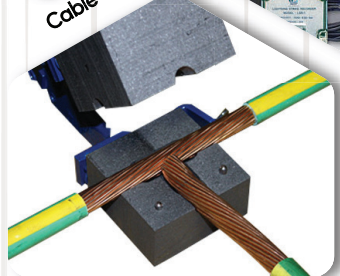
Lightning Arrester



Electrical Conduit / GI Flexible Pipe



Mid Hinged Pole



CAD Welding



Smart Home Automation and Solar



Visit our website

TECH & TRAY

Limitless Power Solution



www.techtray.org

www.smartindustrialelectromech.com

sales@techtray.org

info@techtray.org

sales@smartindustrialelectromech.com

Info@smartindustrialelectromech.com

+92 307 0210211

+92 311 0210211



TECH & TRAY
LIMITLESS POWER SOLUTION

Company Introduction

Tech & Tray is a premier organization specializing in industrial electromechanical supply and services. With a rich history of experience and expertise. We have rapidly earned a stellar reputation as a trusted entity in the market, consistently delivering high-quality and dependable solutions to our valued clients.

As proud channel partners of several world-renowned brands. We have the privilege of offering a diverse range of services tailored to meet our client's specific needs. Our commitment is to empower our clients to attain their desired maximum outcomes through highly efficient and effective technical solutions. At Tech & Tray, we excel in designing and manufacturing customized solutions that precisely align with our clients' requirements.

Our dedicated team of certified engineers boasts extensive experience in their respective fields, ensuring the highest standards of quality and professionalism in all our endeavors. We are not just a technology company; we are a dependable partner dedicated to delivering top-notch technical expertise to businesses and individuals alike.

Tech & Tray also proudly associates with sister companies such as **QADRI INTERNATIONAL GROUP OF COMPANIES, SMART INDUSTRIAL ELECTRO MECH, PRO-S, and numerous other cutting-edge technology firms.** Together, we form a network of hi-tech companies committed to innovation and excellence.

Our Vision and Mission

Our vision & mission at Tech & Tray is to become a leading provider of industrial electromechanical solutions for organizations that will achieve their highest goals through our expertise.

Table of Content

01	Cable tray management system	04
02	Copper Materials (Industrial Earthing & CAD Welding)	06
03	Lightening protection	08
04	LV Panels (JB's, DB's)	09
05	Electrical Components	10
06	Electrical Poles	11
07	Automation and Fire Alarm Systems	12
08	EMT Electrical Conduit Pipes and Accessories	13
09	PVC Coated and Simple GI Flexible Pipes	14
10	Cable Termination Material	15
11	Fasteners	16
12	Smart Home Automation & Solar System	17
13	Services	18
14	Clients	19

Cable Trays Management System

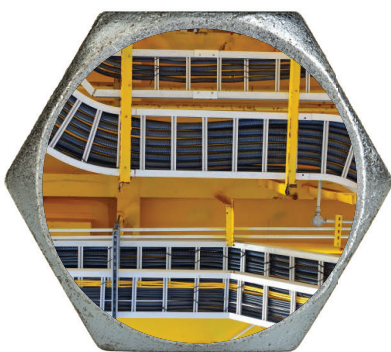
Perforated Cable trays

Suitable for power, instrument, and data cables.	Significant cost savings compared to standard trays.
Length: 1 m to 6 m (standard: 3 m/2.44 m).	Lightweight with width from 100 mm to 1200 mm.
Width: 50 mm to 900 mm.	Quick and flexible installation, cable entry at any point.
Thickness: 20SWG to 12SWG.	Securable with clamps or ties.
Materials: GI, MS, Hot Dip Galvanized, Powder Paint, SS 304/316.	Easy maintenance and line checks.
Custom sizes and materials available on request.	27% stronger weight capacity, Enhanced Cable Cooling

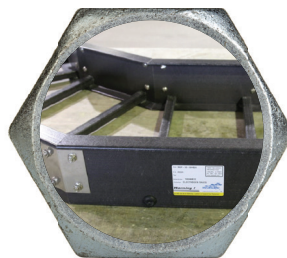
Ladder Cable Trays

Cable Duct-Cable Trunking

Same as a cable tray with a solid bottom.	Duct height: 50 mm to 200 mm.
Suitable for data and instrument cables.	Material options: GI sheet, MS HDG and Powder Paint.
Duct width: 50 mm to 900 mm.	long-lasting performance.



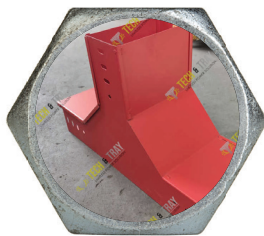
Ladder Tray with Cable



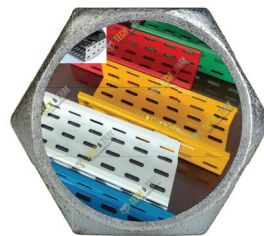
Short Steps Matte Black Bands



Perforated Cable Tray with Cover and Support Systems



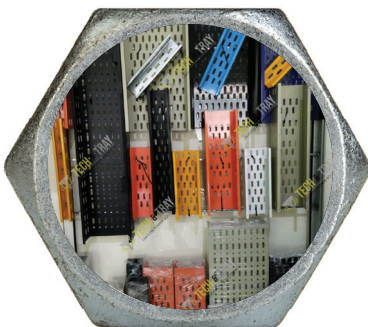
Channel type Inside Band Tree



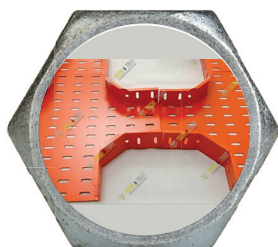
Powder Coated GI MS Cable Trays



Powder Coated Perforated Cable Trays



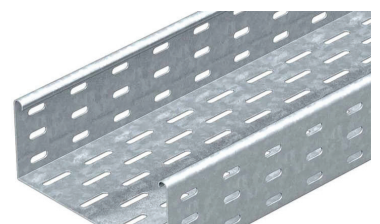
SAMPLES Availabe



Cross 4 ways Perforated Cable Tray



Ladder Screwed Type Cable Tray



GI Perforated Cable Tray

Uni-Strut Channel & Supporting System

Made from CRC/HRC/GI sheet.

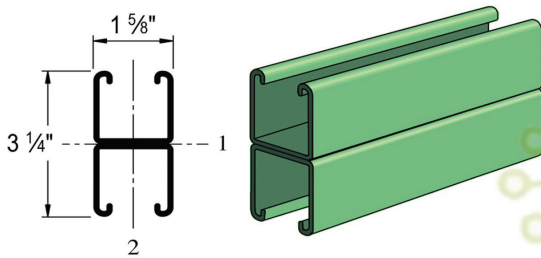
Galvanized (Hot Dip or Pre) or Powder Coated.

Length option: 1 m to 6 m, or customized.

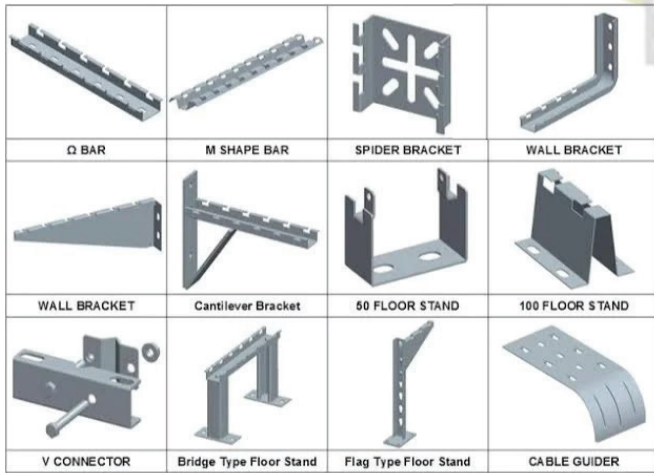
Corrosion-resistant finish.

Quick & easy installation.

Versatile for framing and cable management in various projects.



Uni Strut Base C type Support



Unistrut with Support Joints Accessories



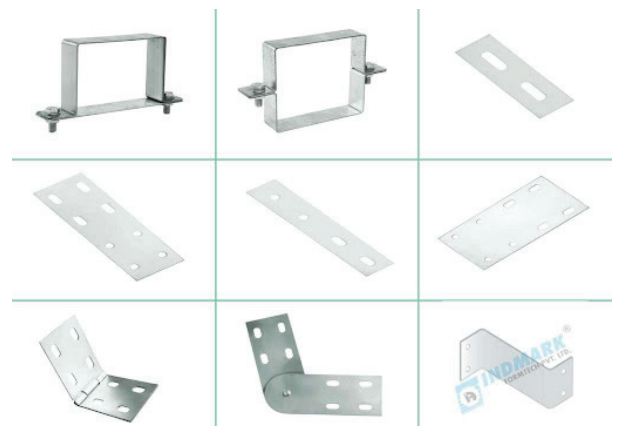
unistrut-clamps-for Conduit Pipes



unistrut-channel bracket-spring-nut



Floor Mounted Support



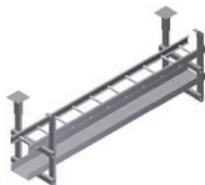
Uni Strut Base C type Support



Floor Mounted Support



Ceiling Mounted Support



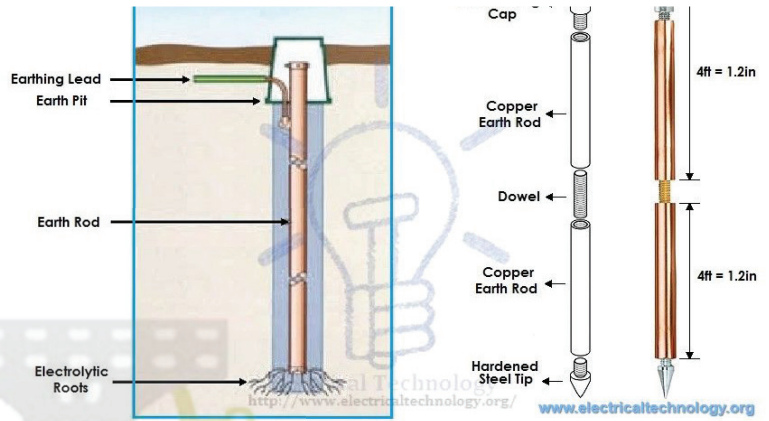
Wall Mounted Support



Copper Materials

Industrial Earthing

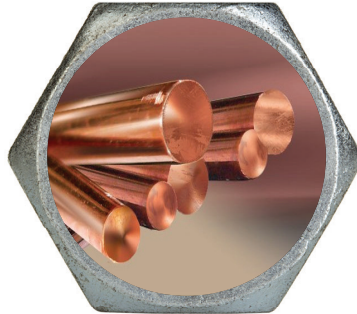
- Concrete Grounding Pit.
- Grounding Powder.
- Ground Test Points and Disconnecting Links.
- Various Types of Terminals and Clamps.
- Solid Round Copper Conductors (Uninsulated).
- Copper Strips (Uninsulated).
- Pure Copper Rods.
- Copper Sleeve Rods.
- Copper-Coated Rods.



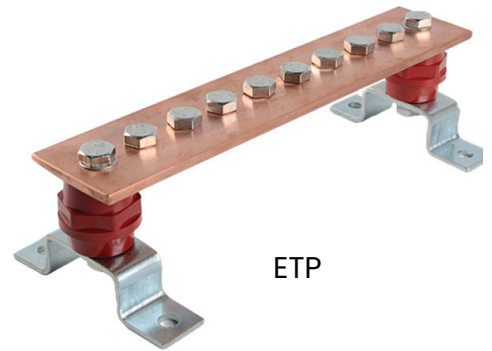
Copper Rod Electrode Earthing System



Bare Conductor Wire pure copper



Pure copper-rods



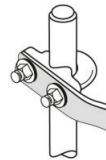
ETP



100 % Tested Connections



U clip



Earthing Test Meter



Earthing Management System

CAD Welding

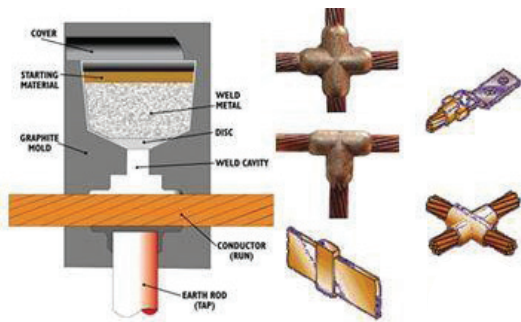
Tailor CAD Welding to your specific length and width requirements.

Ensures reliable exothermic welding for permanent cathodic protection connections.

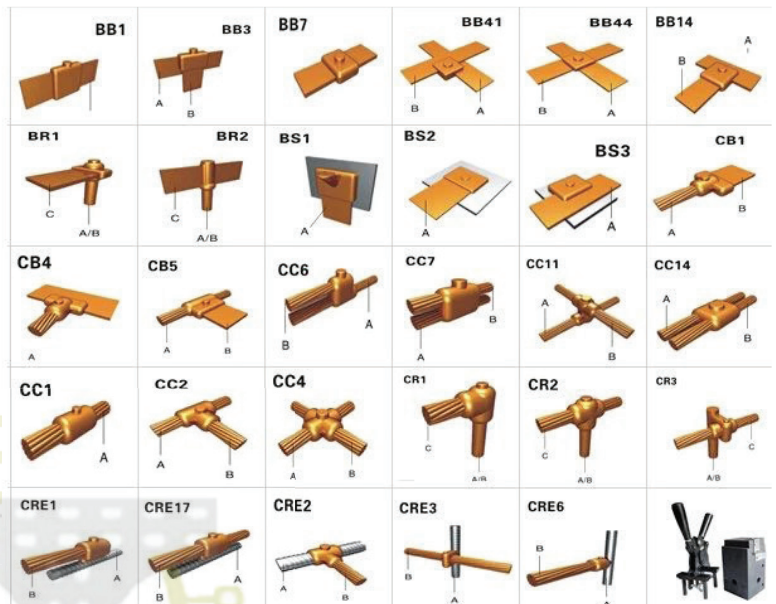
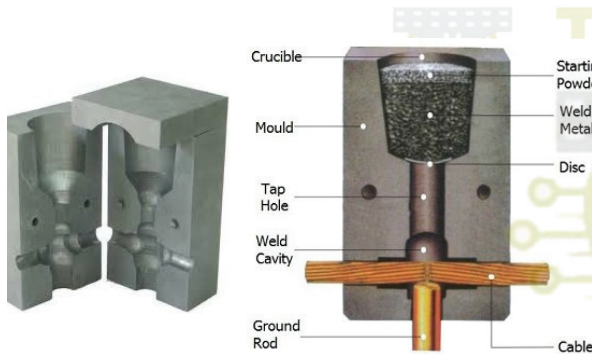
Includes three weld metals and a range of molds for flexible applications.

CAD Welding's quick and hassle-free process.

CAD Welding systems are built with robust construction with consistent performance and durability.



Joint Process Result

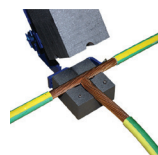


Types of Joints

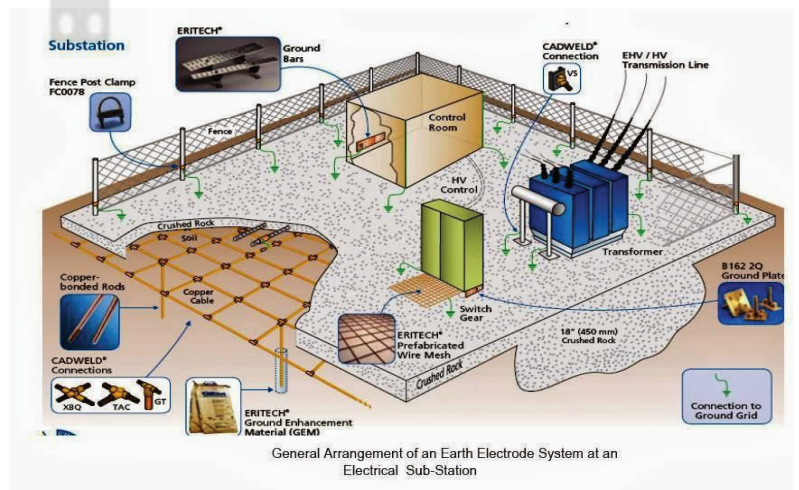
Exothermic-Welding-Graphite-Mold



Tools-for-Exothermic-Welding

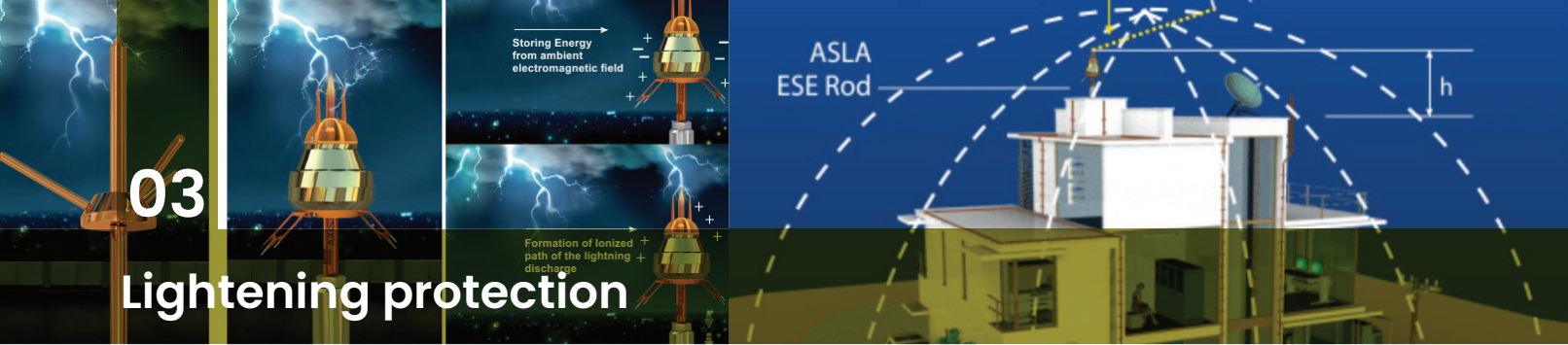


Cad Welding cable arrangement Positioning



General Arrangement of an Earth Electrode System at an Electrical Sub-Station

CAD Welding Joints Network During Earthing



03

Lightning protection

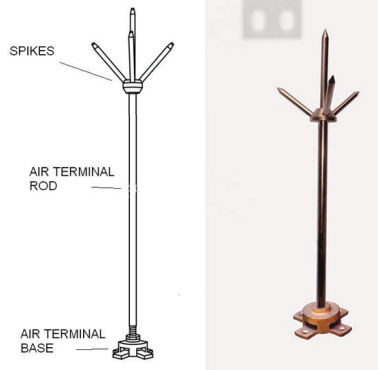
- Certified Advanced Active Lightning Protection System.
- Copper Lightning Arrestors.
- Single-Core Insulated Copper Wire.
- Cutting-Edge Early Streamer Emission Technology.
- Lightening Strike Counters.
- Galvanized Early Streamer Emission Poles.
- Comprehensive Connection and Mounting Accessories.
- Insulated Copper Tapes.
- Earth Testing Solutions.



Lightning Arrester Spikes Balls



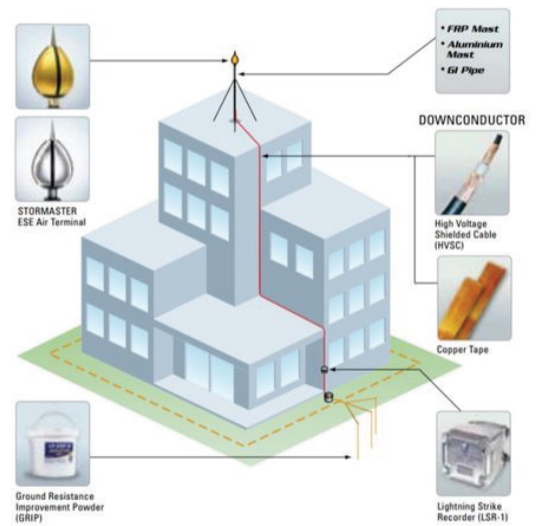
Lightning Arrester Spikes Balls



Arrester 3D Model



Arrester 4 Way Base



Working Structure of Lightning Arrester



Lpi-stromaster-lightning



LPI Australian Arrester

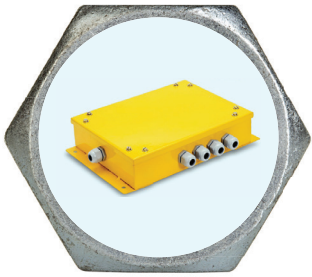


Copper Lightning Arrester with strip joints

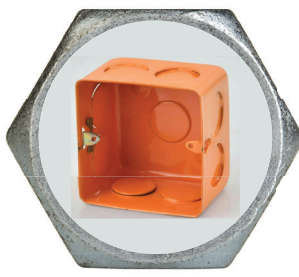
08

LV Panels (JB's, DB's)

Low-Tension Panels (LT Panels).	Imported Panels and Distribution Boxes.
Power Factor Improvement Panels.	Stainless Steel Junction Boxes.
Indoor/Outdoor Distribution Boards.	Technology Boxes.
IP66-rated MS/PVS Junction Boxes.	Fire Hose Panels.
Explosion-Proof Junction Boxes (JBs).	Back, Floor, and Cable Pull Boxes.



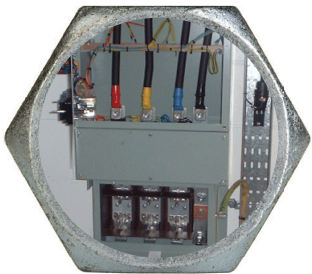
Ground Mounted Electrical Junction-Box



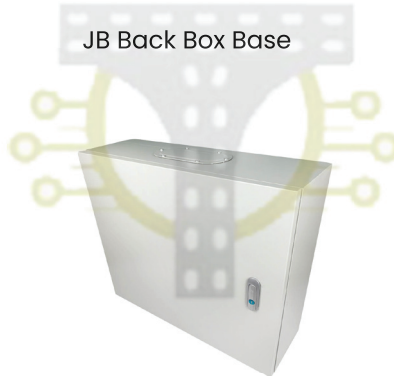
JB Back Box Base



PVC DB for Solar Systems



3 Phase Termination Panel



Power-distribution-box



Closed JB



Technology Box With DBs



electrical-enclosures



Open Hut Type Outdoor DB IP 55



Floor Mounted JB's



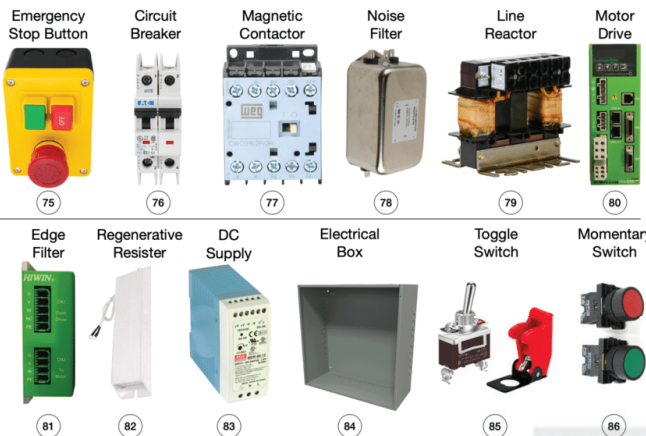
Open DB enclosure



05

Electrical Components

Miniature Circuit Breakers (MCB).	Various Types of Fuses.
Molded Case Circuit Breakers (MCCB).	Power Factor Capacitors and Relays.
Air Circuit Breakers (ACB).	Line-Up Terminals and Connectors.
Vacuum Circuit Breakers (VCB).	Ammeters, Voltmeters and Selector Switches.
Contractors, Relays, and Timers.	Motor Starter Panels (DOL, VFD, Star Delta).



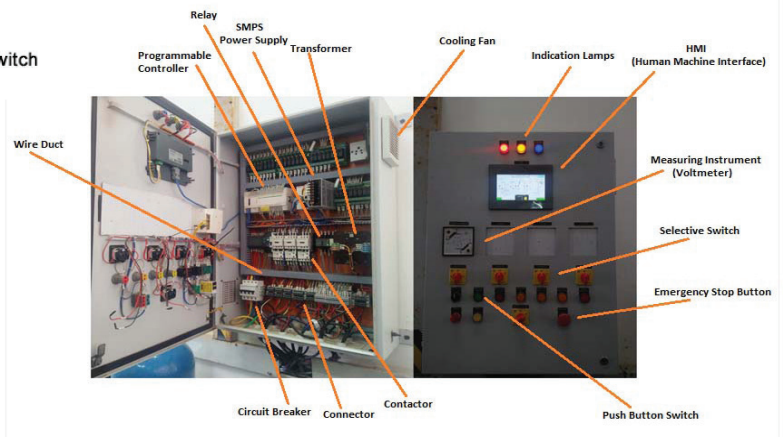
Breakers, Relays, switches



Electrical Accessories



low-voltage-components-devices



Industrial Electrical Control Panel Components

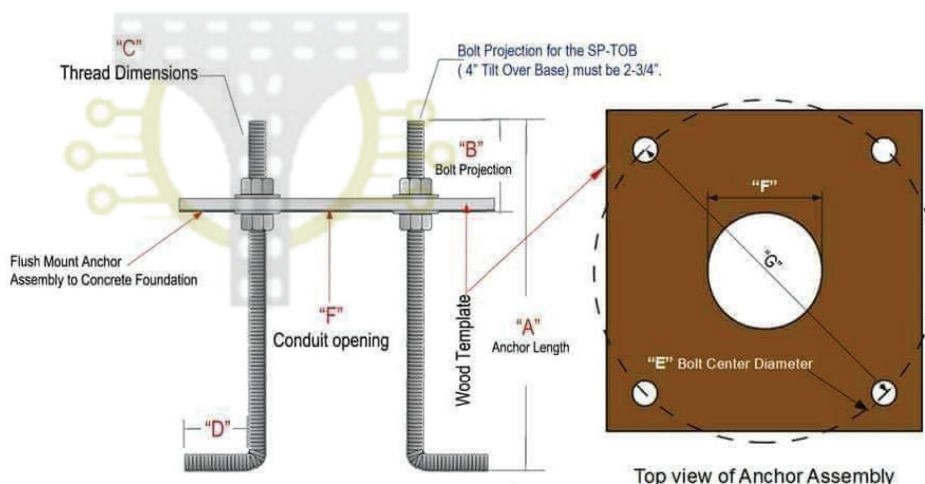
06

Electrical Poles

Various pole types for diverse applications.	Compliance with safety standards.
Customized options available.	Mid Hinged Foldable poles & Fixed Type Electrical Poles.
Pole accessories for added functionality (J & L Bolts with nuts).	Tubular, Octagonal, Round Conical Poles (Hot Dip Galvanized & Painted).
Crafted from quality materials.	LED & Flood Lights (Single & Double Arms Poles).
Weather-resistant finishes for durability.	RCC Pole Foundation.



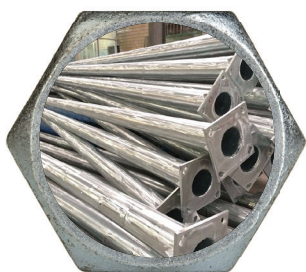
Foldable Risk free Maintenance Pole



Pole Size	Anchor Assembly Part #	\"A\"	\"B\" Bolt Projection	\"C\"	\"D\"	\"E\" BCD	\"E\"	\"G\" BCD
4\" Square Poles	SP-AB	18\"	2-1/4\" **	5/8\"-11 x 6\"	4\"	8.5\"	Maximum OD 3\"	8.5\"
5\" Square poles	SP-AB-5\"	24\"	2-3/4\"	3/4\"-10 x 6\"	3.5\"	10.5\"	Maximum OD 4\"	10.5\"

**NOTE: Bolt Projection for the SP-TOB (4° Tilt Over Base) must be 2-3/4\".

Pole Anchor with Base details



10m 12M height (solar power energy) Pole



L Anchor threaded Bolts



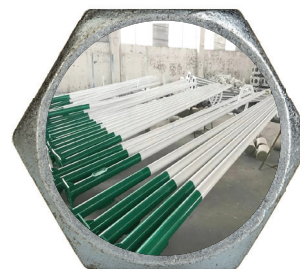
Poles



Anchor Bolts base plate

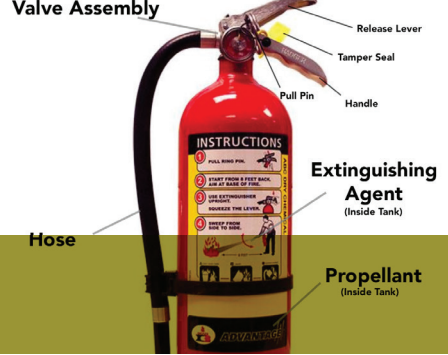


Mid hinged joint foldable pole



Round Conical Base Powder paint poles

Automation and Fire Alarm Systems



Automation Solutions and Accessories

Premium-grade automation components designed for seamless integration.

Comprehensive options, including sensors, actuators, controllers, connectors and junction boxes.

Compatible with all automation types. HMI /SCADA, PLCs/DCS (IOs Modules), VFD, Arduino, Instrumentations , AC/DC Servo Drives, Motion Controllers.

Top-Tier Automation Solutions.

Fire Alarm Systems

Efficient solutions for automation.

Up to 18 powered loops, 1,000 control zones, and 10,000 event entries.

Addressable Sounder with flasher and voice alarm.

Reliable fire alarm systems.

Customized according to your requirements.

Fire Suppression System

A wide range of sizes from 16 lbs to 1300 lbs.

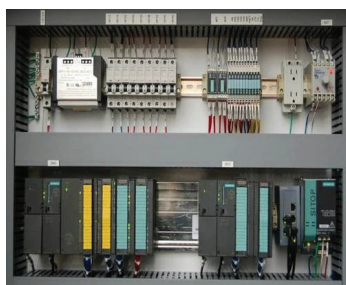
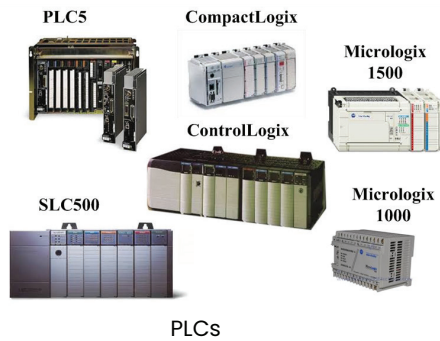
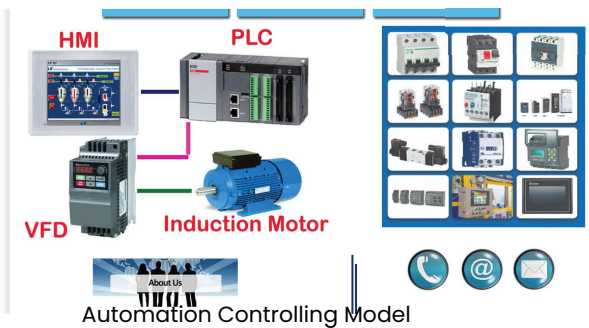
Flooding systems can be activated manually or automatically.

Compliance with industry standards for safety and reliability.

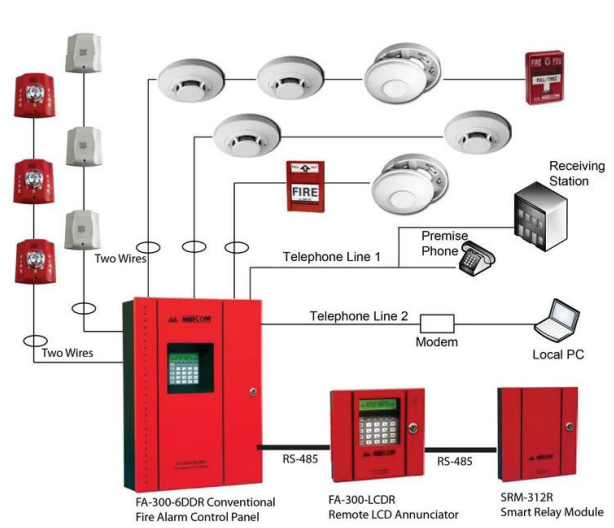
Comprehensive fitting options, including brackets, hoses, nozzles, valves control panels.

Robust construction for dependable performance.

Easy Installation: Suitable for various fire suppression system setups.



Automation Control Panels



fire-alarm-systems-1000x1000



Fire-Alarm-System



Fire-Extinguisher-Parts

Working With Brands Like :



Brands Name

EMT Electrical Conduit Pipes and Accessories

Export-quality hot-dip galvanized conduit (compliance with BSS 1387/1985).

Sizes range from 1/2" to 6", standard length 6 meters.

Comprehensive fitting options including saddles, clamps, elbows, end bushes, sockets and junction boxes.

Robust construction ensures lasting performance.

Easy for all kind of accessories installation: Compatible with all EMT types.

High-Quality EMT Conduit.



90 Deg Imported GI Color Coated Bands



Screw type Bands accessories



Screw type Bands accessories



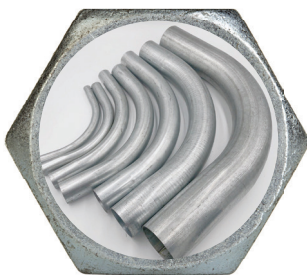
Diffrent Types of Bands



Threading For CODUIT Pipes



SIZES of (GI Saddle)



emt-elbow



Single Arm (GI Saddle)



EMT Pipes



Jubilee Clip

PVC Coated and Simple GI Flexible Pipes

Versatile PVC-coated and simple GI flexible pipes.	Customization options available.
Ideal for various applications.	Expert installation services.
Comprehensive range to meet diverse need.	Compliance with industry standards.
High-quality materials ensure durability.	Reliable conduit solutions for efficient cable management.
Weather-resistant coatings for long-lasting performance.	Imported PVC-coated GI flexible conduit (available in grey and black) with connectors and joints.



Bands, JBs, Sockets , 2-3 ways ,
T type Pipes accessories



GI PVC COATED FLEXIBLE PIPES



Flexible-Metal-Conduit



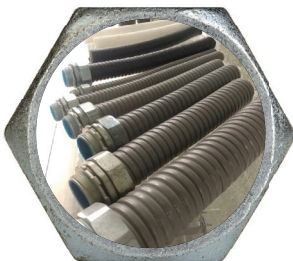
PVC Electrical Pipes with
Accessories



Barton-flexible-conduit



GI GLANDS



SAPMLES FOR GI PVC COATED
FLEXIBLE PIPES



Base ,bands , JBs Pipe accessories



GI Socket Glands for Flexible Pipes

Cable Termination Material

Copper Cable Lugs.	HT-LT Termination & Jointing Kits.
Aluminum Cable Lugs.	Cable End Caps.
Bi-Metallic Cable Lugs.	Cable Clamps.
Brass PVC/PVC/Armor Cable Glands.	Cable Rollers.
Brass PG Cable Glands.	Cable Drum Jacks.
PVC PG Cable Glands.	Cable Ferrules (Numbering).
PVC Cable Ties.	Stainless Steel and PVC Cable Tags.
Stainless Steel Cable Ties.	Cable Tag Printing Machines.
PVC Coated Stainless Steel Cable Ties.	



Cable End Caps



Local cable-lugs



Cable-Ties



Inner Cable Lugs



GI GLANDS



PG GLANDS



Imported Cable Lugs



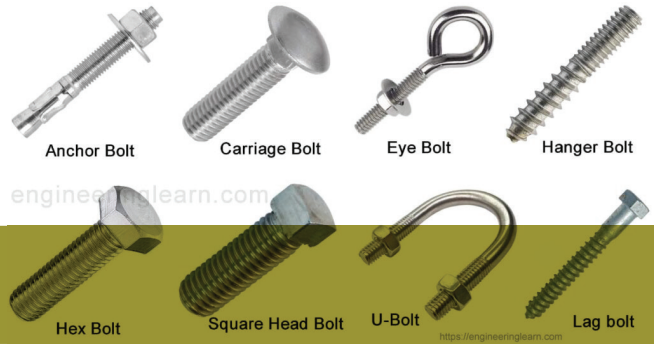
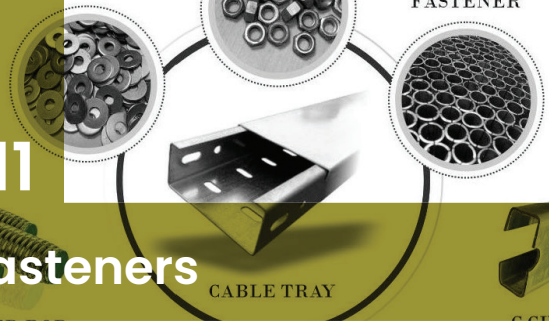
Straight line cable roller single wheel cable pulley

WASHER

ANCHOR FASTENER

11

Fasteners



Bolts and Nuts.	Brackets and Hangers.
Screws and Washers.	Cable and Wire Fasteners.
Anchors and Plugs.	Nails and Staples.
Rivets and Rivet Nuts.	Cable Ties and Straps.
Threaded Rods.	Strut Channels and Accessories.
Clips and Clamps.	Cable and Wire Fasteners.
Hooks and Eye Bolts.	Fastening Tools and Accessories.



L Bolts



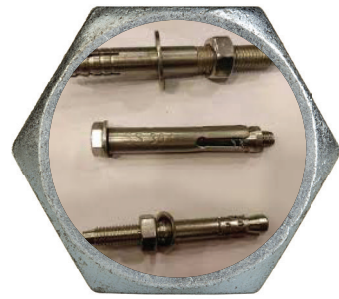
Nut Bolts Fischer



Fischers



HEX HEAD carriage NUT BOLTS spring washers



Pipe Anchor bolts



Hook Type Anchor bolts



HEX HEAD carriage NUT BOLTS spring washers



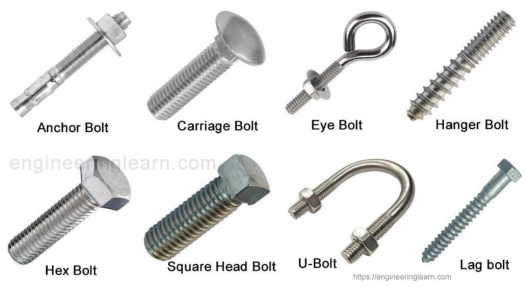
I, J, L, Anchor, Rawal Bolys



Wedge Anchor



Sleeve Anchor



16



Smart Home Automation and Solar System

Smart Home Automation (IoT-based)

Seamless Integration: Ensure effortless integration with diverse IoT devices for simplified control and management.

Remote Accessibility: Enable homeowners to remotely monitor and control their systems via secure mobile apps or web interfaces.

Energy Efficiency: Prioritize energy efficiency through automation and data analytics for heating, cooling, lighting, and appliances.

Enhanced Security: Implement advanced security features like real-time alerts, surveillance camera integration, and smart locks to bolster home safety.

Voice and AI Integration: Support voice assistants (e.g., Alexa, Google Assistant) and AI-driven algorithms for intelligent automation and personalization.

Data Privacy: Enforce robust data privacy and security measures to safeguard homeowner information from unauthorized access or breaches.

Solar System

Customized Solutions: Tailor solar systems to match individual energy needs and consumption patterns.

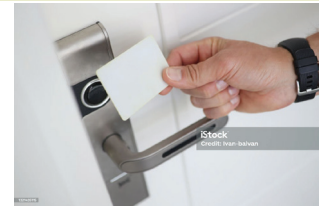
Financial Clarity: Clearly communicate the financial benefits of solar installations, including cost savings, incentives, and long-term ROI.

Expert Installation: Guarantee optimal performance by deploying certified license holder Engineers for professional system installation.

Monitoring & Maintenance: Maintain peak efficiency with continuous monitoring and swift issue resolution through maintenance services.



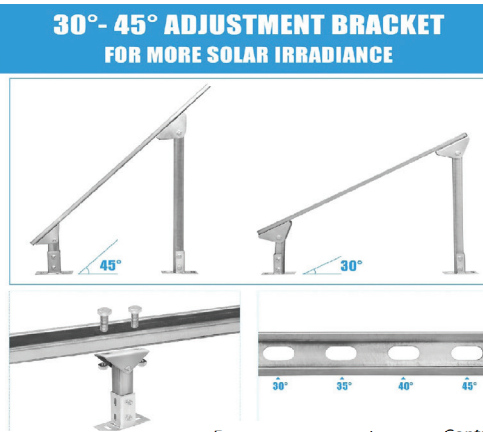
GSM Security System



Access control

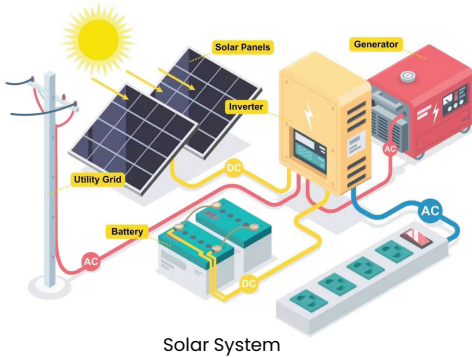


EASY INSTALLATION



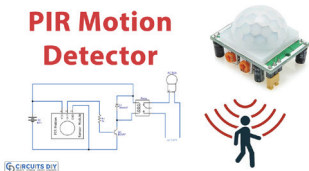
30° - 45° ADJUSTMENT BRACKET FOR MORE SOLAR IRRADIANCE

Mounting & Adjustable Multi-Pieces Solar Panel Supports



Solar System

PIR Motion Detector



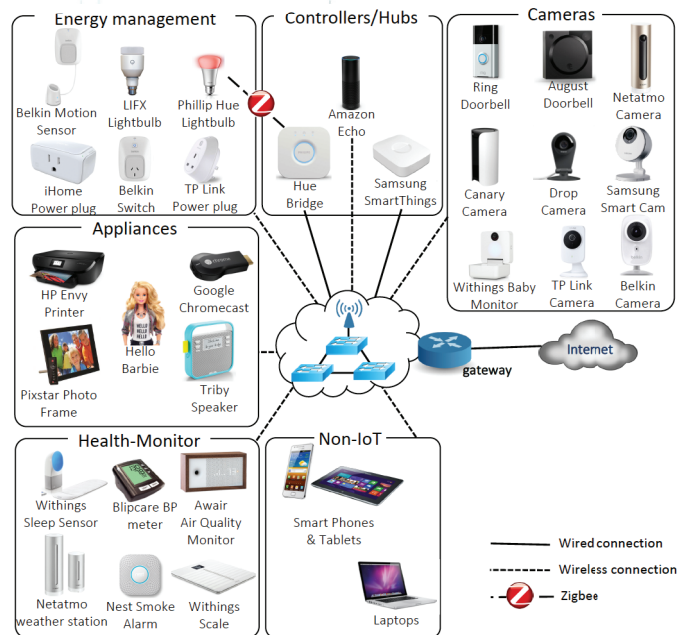
PIR-Motion-Detector-Circuit



Solar Structure L1,L2,L3



CCTV



Home IoT Automation

— Wired connection
 - - - - - Wireless connection
 Zigbee

- A cable management system's design and installation (cable tray).
- Cable Laying, Cable terminations Services
- LV and MV switchgear installation, testing, and commissioning.
- Transformer installation, testing, and commissioning.
- Turnkey project installation, testing, and commissioning.
- Laying, terminating, and testing of LV, and MV cables' insulation.
- Modern earthing and lightning protection system design, installation, and testing.
- Lighting pole and light installation using an RCC foundation.
- Bus Tie Duct design, installation, testing, and commissioning (BTD).
- Fire alarm system design, installation, testing, and commissioning.
- Hi-Pot Testing, Earth Testing, Soil Resistance Testing Services.
- Installation of Solar System and Smart home Automation with testing.



14 Our Clients





TECH & TRAY

LIMITLESS POWER SOLUTION



Follow us on



Email Us

info@techtray.org

Info@smartindustrialelectromech.com

sales@techtray.org

sales@smartindustrialelectromech.com



Visit Our Website

www.techtray.org

www.smartindustrialelectromech.com



Scan QR to visit our Websites



Addresses

Karachi :

Bungalow No: D-8 Block 6 Federal B-Area Karachi, Pakistan

Islamabad :

Bungalow No: 700 Street 45 phase 2
bahria town Islamabad

Middle East : PO Box number 31657 Dubai.



Contact us

+92 307 0210211

+92 311 0210211